

Lions Clubs International

District 105CN

District Governor 2020 – 2021

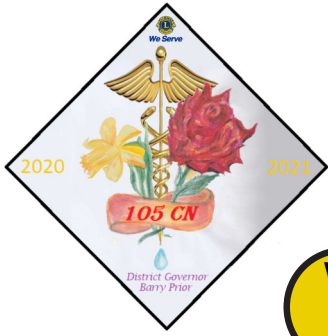
Lion Barry Prior

(Douglas Valley Lions Club)

HUMANITY IS OUR FAMILY

WEEKLY COMMUNICATIONS DIGEST 2020-2021

EDITION 26 - 3rd JANUARY 2021



We Serve

WISHING EVERYONE A HAPPY NEW YEAR

Here's hoping that 2021 is a much better year for everyone, once we get past, the next few weeks. Please keep safe and well.

This Edition of the Digest has some extra quizzes, Courtesy of PDG David Winsland and sourced from Kens Quizzes kensquiz.co.uk

Because of the extra number and, the format of some of the answers, I have put them onto an appendix page. Hope you enjoy

PDG. Harry Hawksworth.

Member of District 105CN Communications Team

QUIZ 1

(Answers on Page 4)

1. The character Idle Jack appears in which traditional pantomime?
2. In Cinderella what does the Fairy Godmother turn into a coach?
3. What occupation is carried out by the dwarfs in Snow White?
4. On what day was it traditional for pantomimes to start their performances?
5. What panto was performed by the cast of "Jam and Jerusalem" in their 2006 Christmas special?
6. In the pantomime Jack and the Beanstalk what does Jack swap in exchange for the magic beans?
7. In a traditional pantomime from which side of the stage should the villain appear?
8. Which music hall performer is best known for creating the role of Pantomime dames?
9. The pantomimes "Cinderella" and "Mother Goose" are based on which author's collection of Fairy tales?
10. In 2019 Cinderella was once again the most popular pantomime, but which production came second?
11. The character Dandini appears in which traditional pantomime?
12. Starring comedian John Bishop as local radio DJ Lewis Loud, what pantomime was being produced in the 2012 TV movie "Panto!"?
13. Which comic couple were awarded the Lifetime Achievement Award at the 2020 Great British Pantomime Awards?
14. Usually played by a female, what name is given to the leading man's role in a pantomime?
15. The Ugly Sisters make an appearance in which festive pantomime?
16. The original story of Aladdin appeared in which book?
17. In the pantomime Dick Whittington, who does Dick marry?
18. Who took the soundtrack to their 1964 panto "Aladdin and his Wonderful Lamp" into the charts?
19. What is the name of Cinderella's father?
20. In 2019 Guernsey issued a set of coins celebrating the British pantomime with designs featuring, Cinderella and Jack and the Beanstalk amongst others. What denomination were the coins?

QUIZ 2

(Answers on Page 4)

- Which monarch was the first to make the annual broadcast to the nation ?
- In which film was the song "White Christmas" first featured ?
- In Dickens's "A Christmas Carol" which is the first ghost to visit Scrooge ?
- What is the Welsh for Christmas ?
- What did Santa Claus win in 1964 ?
- Which of Santa's reindeer share it's name with an electrical retailer ?
- Which "Eastenders" character had a baby on Christmas Day 1998 ?
- In which country did the Poinsettia originate ?
- The plant "Viscum Album" is better known as which Christmas decoration?
- Which rock singer starred in the film "Merry Christmas Mr. Lawrence" ?
- Which female character left "Coronation Street" on Christmas Day 1987 ?
- Which seasonal job was first filled by James Edgar in 1890 ?
- With which seasonal product did J C Hall make his millions ?
- Who composed "The Christmas Oratorio" ?
- In which film did Judy Garland sing "Have Yourself a Merry Little Christmas" ?
- What is myrrh ?
- What name is given to the four week period leading up to Christmas ?
- Who discovered Christmas Island ?
- In which fictional land is it always winter but never Christmas ?
- Which fruity sauce is a usual accompaniment to the Christmas turkey

TOYS OF THE YEAR

Can you name the toys that were voted Toy of the Year by the UK Toy Retailer's Association.

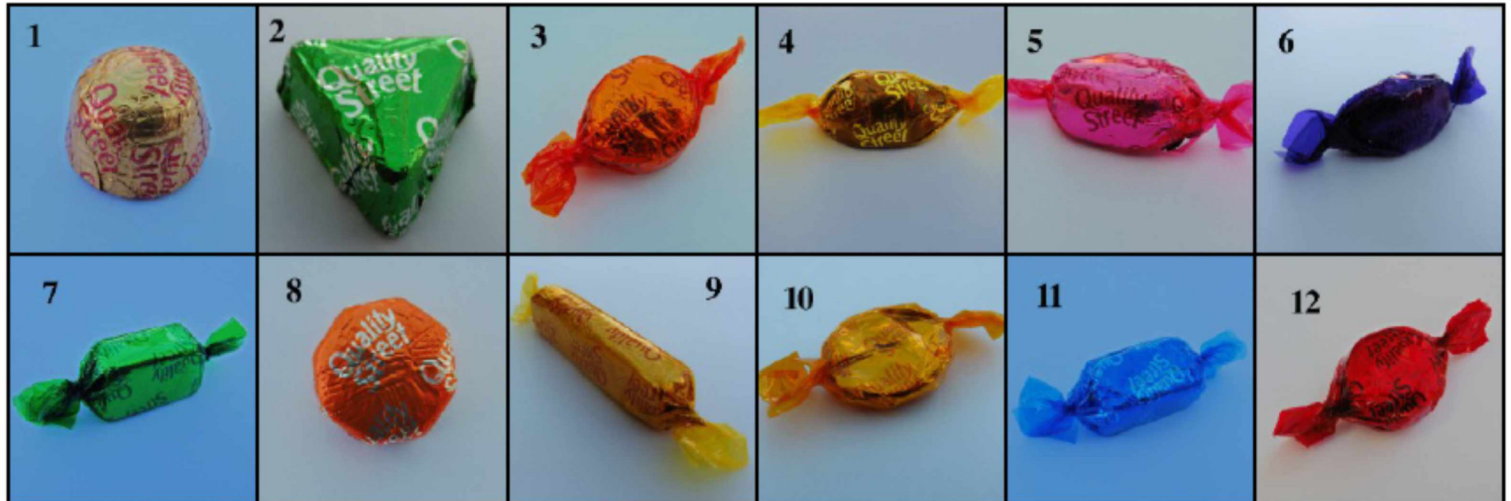
(Answers at the bottom of Page 2)



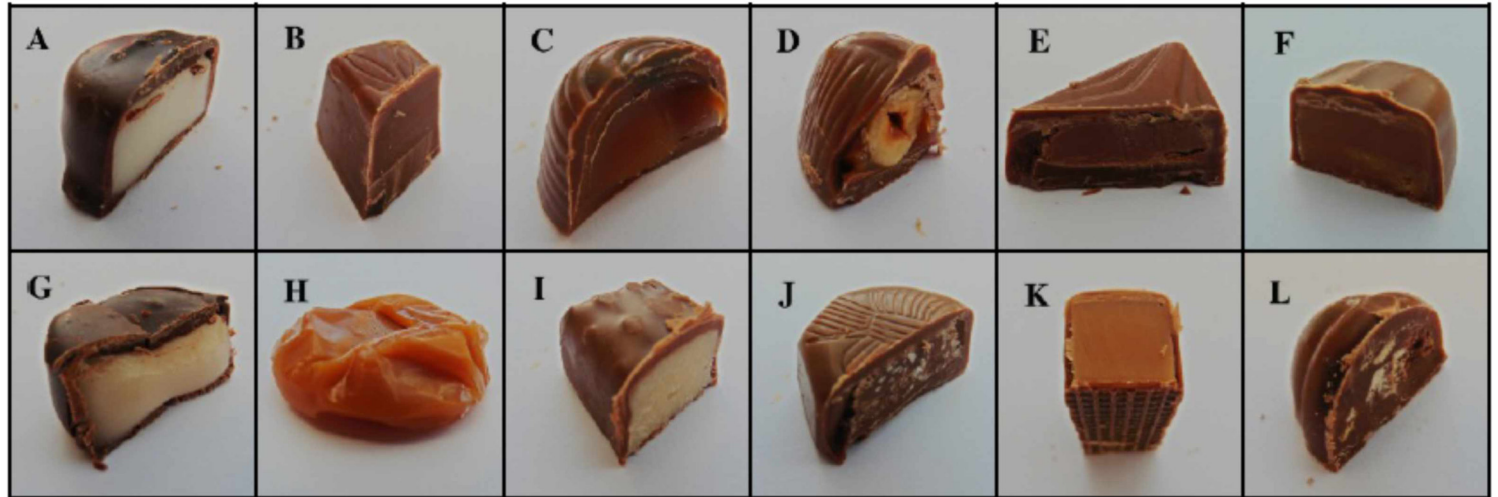
MADE FOR SHARING

Can you match these Quality Street wrappers with their chocolates and their names?
(Answers on Page 4)

WRAPPERS



CHOCOLATES



NAMES

	Number	Letter		Number	Letter
THE GREEN TRIANGLE			CARAMEL SWIRL		
TOFFEE FINGER			COCONUT ECLAIR		
FUDGE			MILK CHOCOLATE BLOCK		
HONEYCOMB CRUNCH			TOFFEE PENNY		
THE PURPLE ONE			ORANGE CREME		
ORANGE CHOCOLATE CRUNCH			STRAWBERRY DELIGHT		

USEFUL LINKS

[DISTRICT CALENDAR](#)

[COMMUNICATIONS DIGESTS](#)

[CN FORUM](#)

[DISTRICT NEWSLETTERS](#)

[CLUB EVENT DETAILS](#)

[CHARTER DETAILS/FORMS](#)

[ENVIRONMENTAL NEWSLETTER](#)

[CLUB INSURANCE](#)

[POLICY DOCUMENTS & DATA PROTECTION GUIDELINES](#)

*The next Edition of the Comms. Digest will be issued on Sunday 10th January.
Please let PDG Lion Harry Hawksworth have items by Friday 8th January
Email: digestcoordinator@lionsclubs105cn.org.uk
with the Subject 'Item for the Digest'.*

QUIZ ANSWERS

QUIZ 1 - ANSWERS

1. Dick Whittington. 2. Pumpkin. 3. Miners. 4. Boxing Day. 5. Cinderella. 6. The family cow. 7. Left. 8. Dan Leno. 9. Charles Perrault. 10. Aladdin. 11. Cinderella. 12. Dick Whittington. 13. The Krankies. 14. Principle Boy. 15. Cinderella. 16. One Thousand and One Nights. 17. Alice Fitzwarren. 18. Cliff Richards and the Shadows. 19. Baron Hardup. 20. Fifty pence.

QUIZ 2 - ANSWERS

1. George V in 1932. 2. Holiday Inn (1942). 3. The Ghost of Jacob Marley. 4. Nadolig. 5. The Epsom Derby. 6. Comet. 7. Bianca. 8. Mexico. 9. Mistletoe. 10. David Bowie. 11. Hilda Ogden. 12. He became the first department store Santa. 13. Christmas Cards (Hallmark). 14. J S Bach. 15. Meet Me in St Louis. 16. An aromatic tree resin, often used as incense or perfume. 17. Advent. 18. There are 2 Christmas Islands, the one in the Pacific Ocean (Kiritimati) was discovered by Captain James Cook in 1777, the one in the Indian Ocean by Captain William Mynors in 1643. Both on Christmas Day. 19. Narnia. 20. Cranberry Sauce.

MADE FOR SHARING - CHOCOLATES - ANSWERS

	Number	Letter		Number	Letter
THE GREEN TRIANGLE	2	E	CARAMEL SWIRL	1	C
TOFFEE FINGER	9	K	COCONUT ECLAIR	11	I
FUDGE	5	F	MILK CHOCOLATE BLOCK	7	B
HONEYCOMB CRUNCH	4	L	TOFFEE PENNY	10	H
THE PURPLE ONE	6	D	ORANGE CREME	3	A
ORANGE CHOCOLATE CRUNCH	8	J	STRAWBERRY DELIGHT	12	G

TOYS OF THE YEAR - ANSWERS.

1. Bionicles. 2. Robosapien. 3. Barbie. 4. Playmobil Play People. 5. Game Boy. 6. Iggle Piggle. 7. Furby. 8. Action Man. 9. Hot Wheels. 10. Tamagotchi. 11. He Man. 12. Teletubbies. 13. Mastermind. 14. Beyblades. 15. Elsa, from Frozen. 16. Tracey Island. 17. Sylvanian Families. 18. Teksta Puppy. 19. Lego. 20. Sindy. 21. Katie Kopycat. 22. Teenage Mutant Ninja Turtles. 23. Go Go Hamsters. 24. Leap Pad. 25. Spirograph.